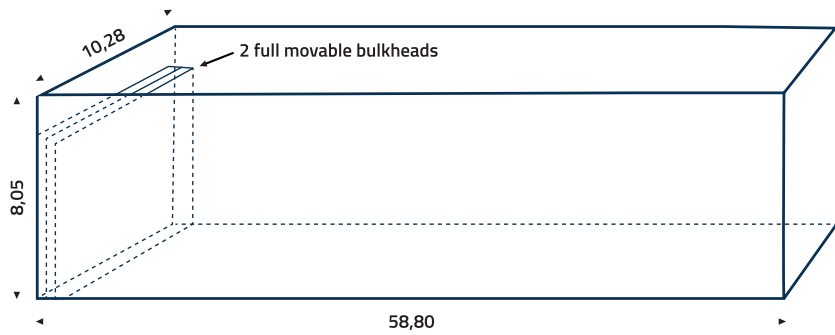
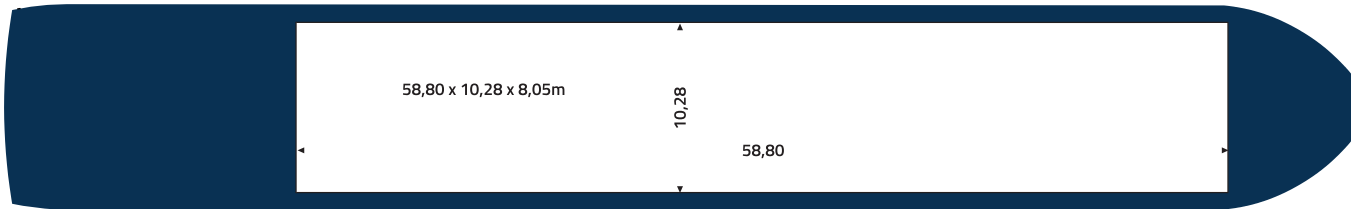
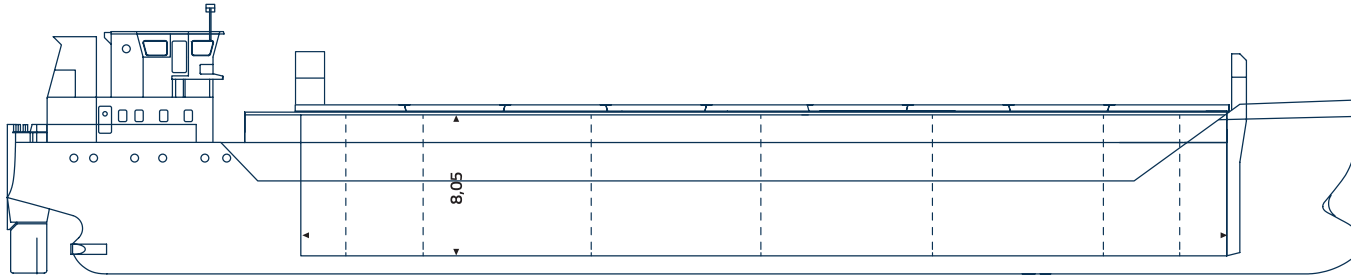




KLAIPEDA



PARTICULARS

Name:	KLAIPEDA
Call Sign:	LYSZ
I M O number:	9106584
Flag:	Lithuanian
Built:	1995
Class:	Bureau Veritas
Ice Class:	Ice Class II
P&I:	Shipowners, London
Type:	Box Singledecker

MEASUREMENTS (t)

Dwat:	4.069
DWCC:	Abt 3700
GT/NT:	2395 /1423

MAIN DIMENSIONS (m)

Loa:	87,80
Beam:	12,30
Draft fully laden:	5,77 on even keel
Airdraft:	13,30 in ballast condition

CARGO HOLD

Grain / Bale:	172.000 cubic feet
Hatch dimensions:	1 hatch: 58,80m x 10,28m
Bulkhead(s):	2
Tanktop strength:	10 t/m ²
Hatch strength:	1,59 t/m ²
Grain fitted	

PROPULSION

ME output:	Kw 1445
Bowthruster:	Kw 260
Speed:	Abt 9 knt
Consumption:	Abt 5,5 cbm G.O.

All measurements in meters, not necessarily in scale. All details believed to be correct, but w.o.g. All rights reserved – © 2016 Danship