

# — H.H. DANSHIP AS —

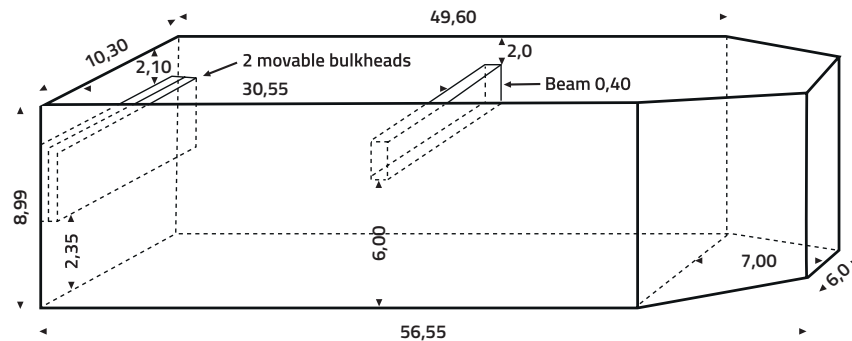
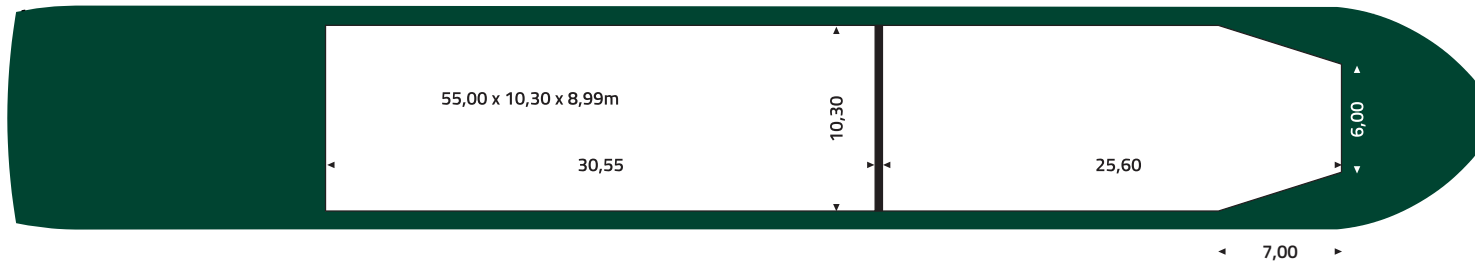
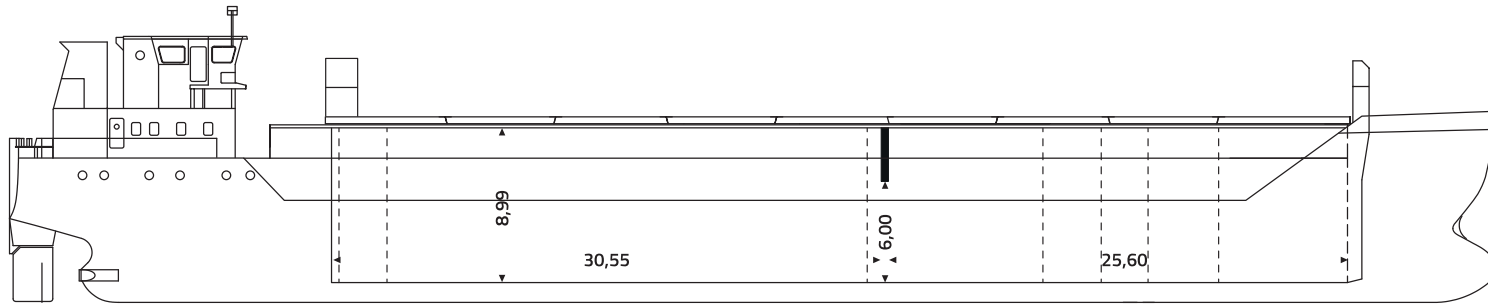
JESSENS MOLE 15 · 5700 SVENDBORG · DENMARK · PHONE +45 63 21 29 29 · FAX +45 62 22 81 91  
danship@danship.as · www.danship.as

## M/V WIDOR

Mobile phone	+49 17617788123
E-mail	operation.widor@telaurus.net
INMARSAT C	421242311@inmc.eik.com
Built	2009
Flag	Cyprus
Call Sign	5BSH2
I M O number	9528483
Draft fully laden	5.30 m on even keel
Airdraft	13,00 m in ballast condition
Dwat	3.400 mts
GT / NT	2474 / 1412
Loa & Beam	82,50m / 12,50m
Class	Bureau Veritas AUT-UMS Finish Iceclass 1A
Type	Box Singledecker
Cubic	177.000 cubic feet grain / bale
Hold dimensions	1 hold: 55,00m x 10,30m x 8,99m high last 7 m in front narrowing to 6 m
Hatch dimensions	1 hatch: 55,00m x 10,30m
Bulkhead(s)	1 (one) – can be used as tweendeck
Strength tanktop/hatch	13 mts / 1.55 mts per square meter strength on tweendeck 1,8 mts per square meter
EORI no.	DE902825442847751



# M/V WIDOR



## PARTICULARS

Name:	M/V WIDOR
Call Sign:	5BSH2
I M O number:	9528483
Flag:	Cyprus
Built:	2009
Class:	Bureau Veritas AUT-UMS
Ice Class:	Finish Ice Class 1A
P&I:	British Maritime
Type:	Box Singledecker
EORI no.:	DE902825442847751

## MEASUREMENTS (t)

Dwat:	3.400
GT / NT:	2474 / 1412
DWCC:	3200

## MAIN DIMENSIONS (m)

Loa:	82,50
Beam:	12,50
Draft fully laden:	5,30 on even keel
Airdraft:	13,00 in ballast condition

## CARGO HOLD

Grain/Bale:	177.000 cubic feet
Timber intake:	4500 m3 LP
Container intake:	34 teu on deck only
Hatch dimensions:	1 hatch: 55,00m x 10,30m
Bulkhead(s):	1 - can be used as tweendeck. Can be separated into 2 two half bulkheads

Tanktop strength:	13 t/m2
Hatch strength:	1,55 t/m2
Tweendeck strength:	1,8 t/m2
Lake Simaa fitted	
Grain fitted	

## PROPULSION

ME output:	Kw 1850
Bowthruster:	Kw 220
Speed:	Abt 11 knt
Consumption:	Abt 8 cbm G.O.

